

CIET

www.ciet.org
building the community voice into planning

Miscellaneous
MI-ZA-wc2-00-b

South Africa

***Year 2000 calendar (Wild Coast) –
Wild Coast spatial development initiative***

Wild Coast Spatial Development Initiative Year 2000 Calendar

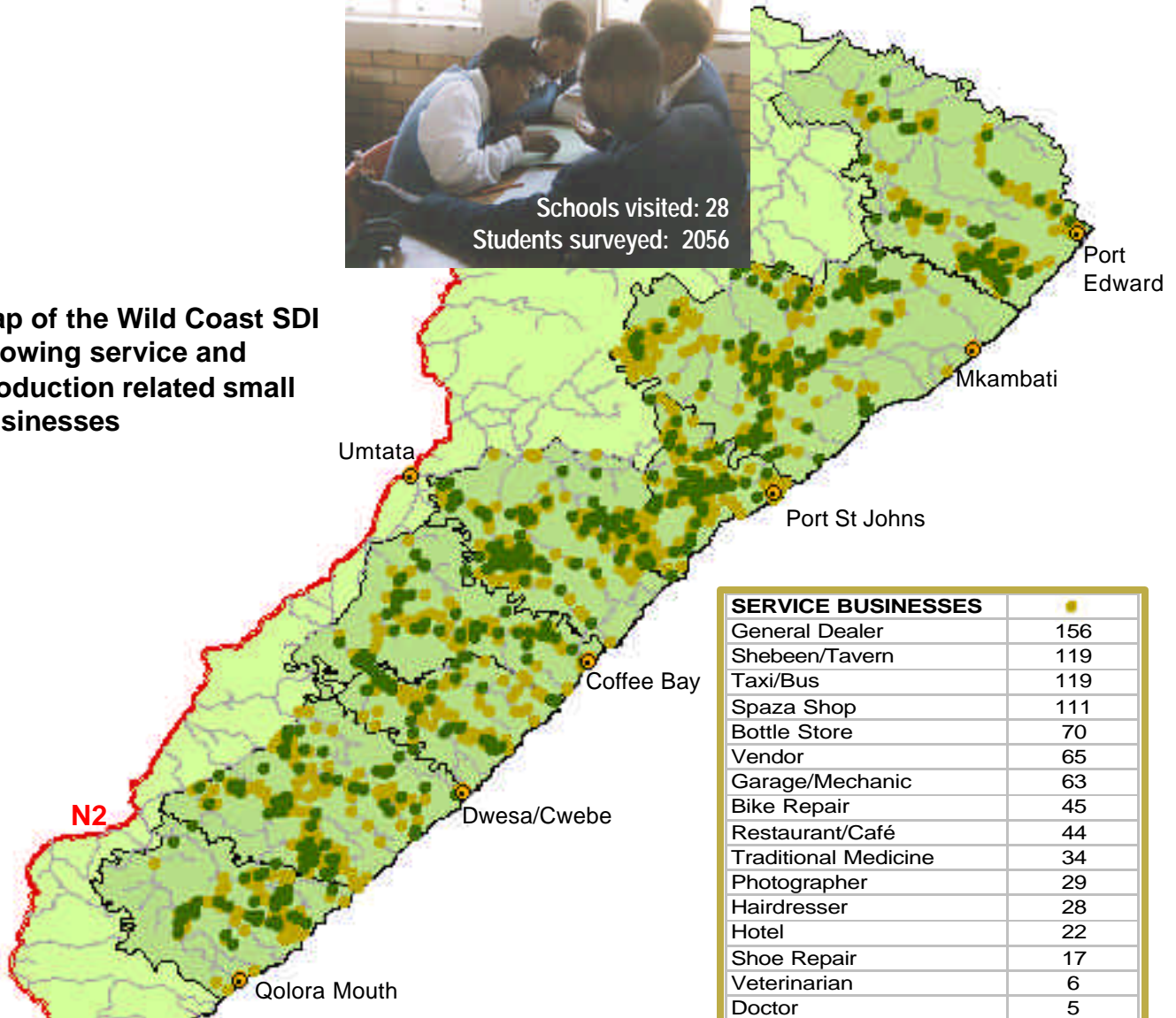
Ecsecc

Eastern Cape Socio-Economic Consultative Council



Schools visited: 28
Students surveyed: 2056

Map of the Wild Coast SDI showing service and production related small businesses



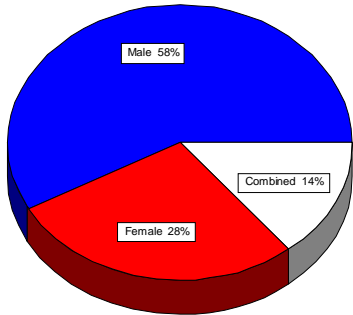
PRODUCTION BUSINESSES	
Arts and Crafts	106
Fruits and Vegetables	105
Brickmaking	87
Livestock	75
Food	68
Dressmaker	21
Fishing	2
Gardening	2
Total	466 (33%)

SERVICE BUSINESSES	
General Dealer	156
Shebeen/Tavern	119
Taxi/Bus	119
Spaza Shop	111
Bottle Store	70
Vendor	65
Garage/Mechanic	63
Bike Repair	45
Restaurant/Café	44
Traditional Medicine	34
Photographer	29
Hairdresser	28
Hotel	22
Shoe Repair	17
Veterinarian	6
Doctor	5
Music	5
Undertaker	4
Welder	4
Tractor Transport	2
Finances	2
Grass Cutting	1
Repair Shop	1
Sports Field Rental	1
Watch Repair	1
Furniture Store	1
Supermarket	1
Bookstore	1
Donkey Hiring	1
Total	958 (67%)

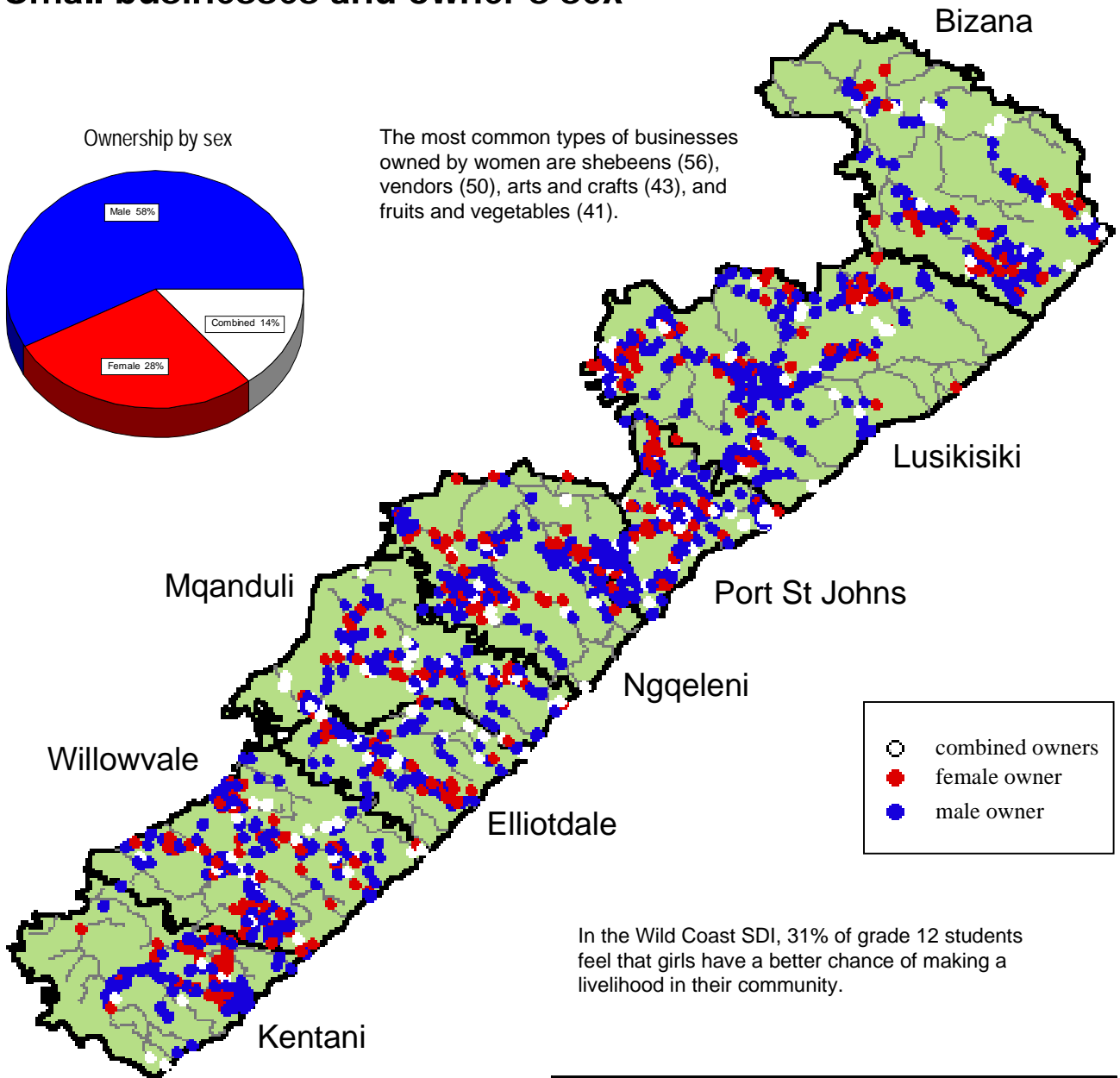
This project is funded by the International Development Research Centre (IDRC) Canada

Small businesses and owner's sex

Ownership by sex

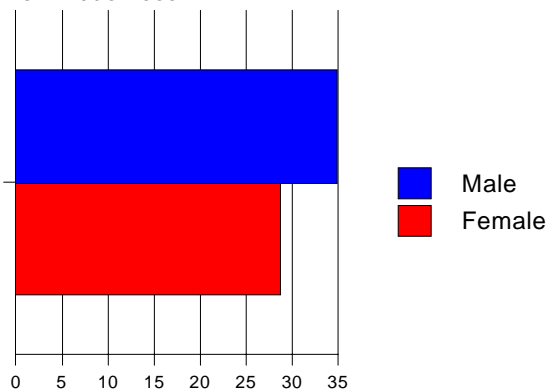


The most common types of businesses owned by women are shebeens (56), vendors (50), arts and crafts (43), and fruits and vegetables (41).



In the Wild Coast SDI, 31% of grade 12 students feel that girls have a better chance of making a livelihood in their community.

% who have considered starting their own business

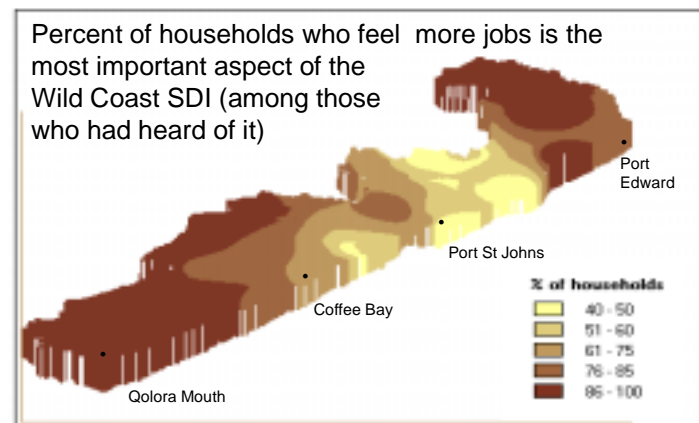
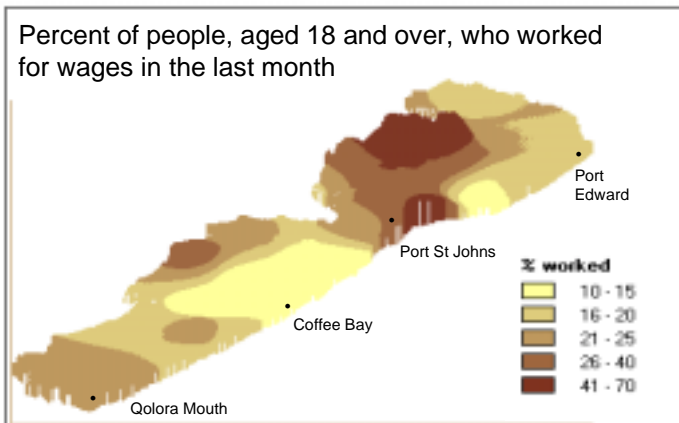
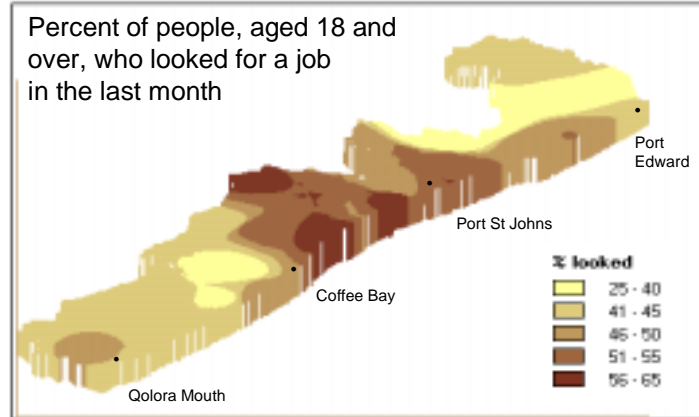
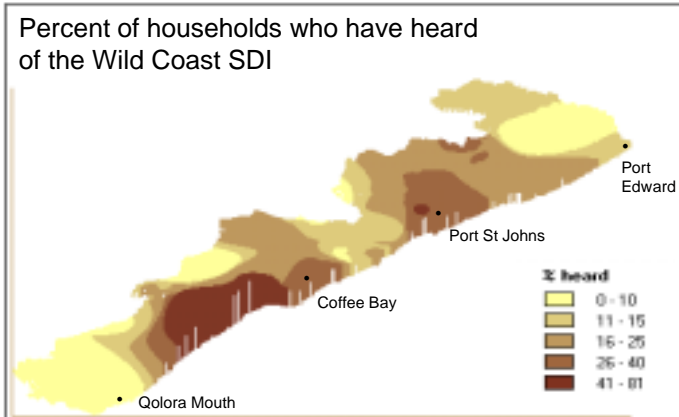


District	Male Owned	Female Owned	Combined Owners
Kentani	63%	29%	8%
Willowvale	57%	30%	13%
Elliotdale	60%	24%	16%
Mqanduli	56%	25%	19%
Ngqeleni	55%	34%	11%
Port St Johns	58%	24%	18%
Lusikisiki	61%	27%	12%
Bizana	59%	26%	15%

"Most males who own businesses are mineworkers who gained some knowledge of the kinds of businesses there are and how to start them. High crime rates also cause women to be afraid to start their own small businesses."
 -Grade 12 student from Bodweni Senior Secondary School

Results from the first cycle:

In 1997, a representative sample of 2475 households were visited throughout the Wild Coast SDI. Overall, one household in four had heard of the SDI, which seeks to promote economic growth through public and private investment.



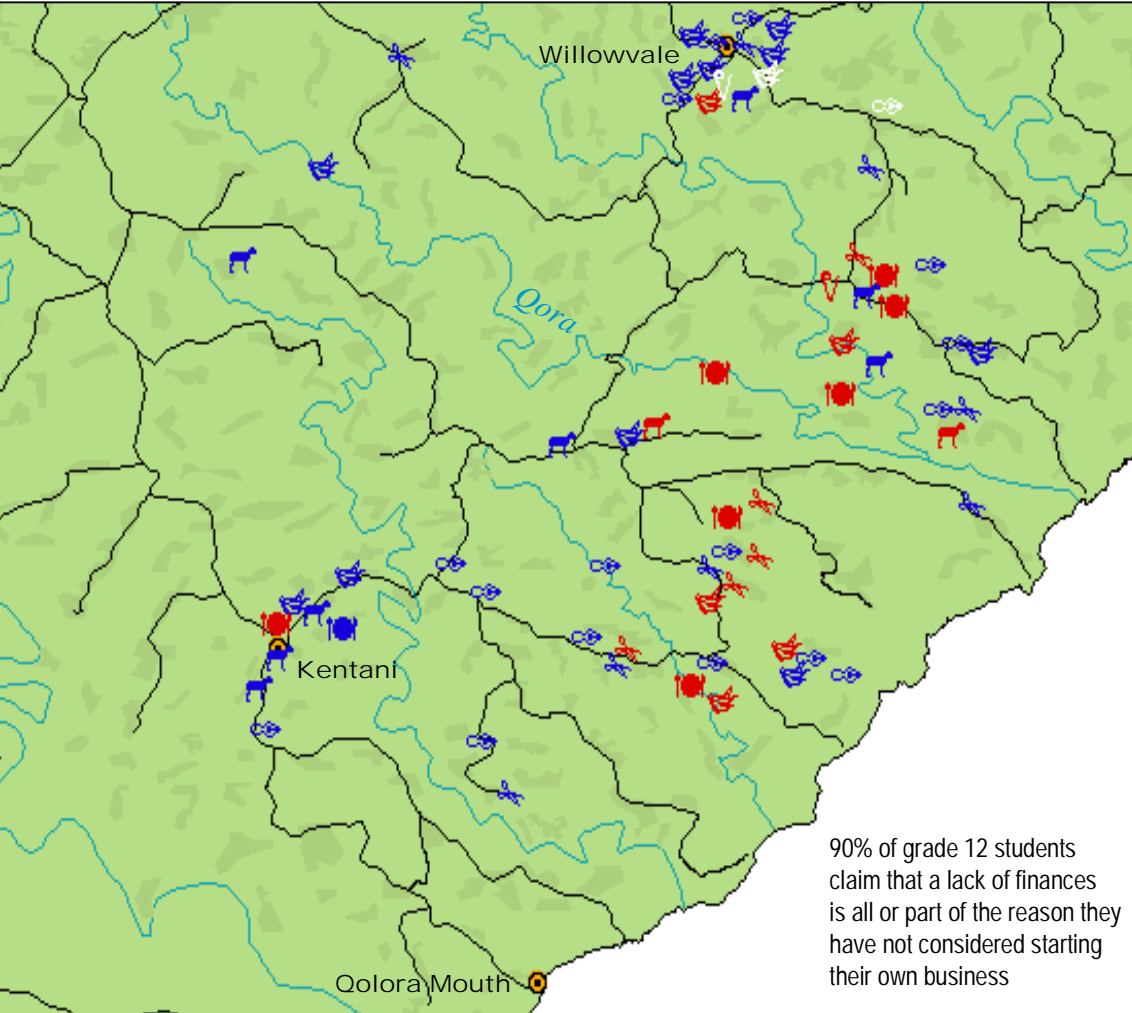
January

The contours in these maps come from a set of 20 sentinel communities that are weighted to be proportional to the population. If 30% of the map area is a certain colour, then 30% of the population falls within the range represented by that colour.

Sunday	Monday	Tuesday	Wednesday	Thursday	Friday	Saturday
						New Year's Day 1
2	Public Holiday 3	4	5	6	7	8
9	10	11	12	13	14	15
16	17	Start of first school term (Eastern Cape) 18	19	20	21	22
23	24	25	26	27	28	29
30	31					

Kentani and Willowvale production businesses

What is the most common type of female owned business in this area?
 Is it the same as the most common type of male owned business?
 If you were to start your own business in this area, what kind would you start?



- Arts and Crafts
- Brickmaking
- Dressmaker
- Fishing
- Food
- Fruits and Vegetables
- Gardening
- Livestock

The colour of the symbol represents the owner's sex

- Male Owner
- Female Owner
- Combined Owners

90% of grade 12 students claim that a lack of finances is all or part of the reason they have not considered starting their own business

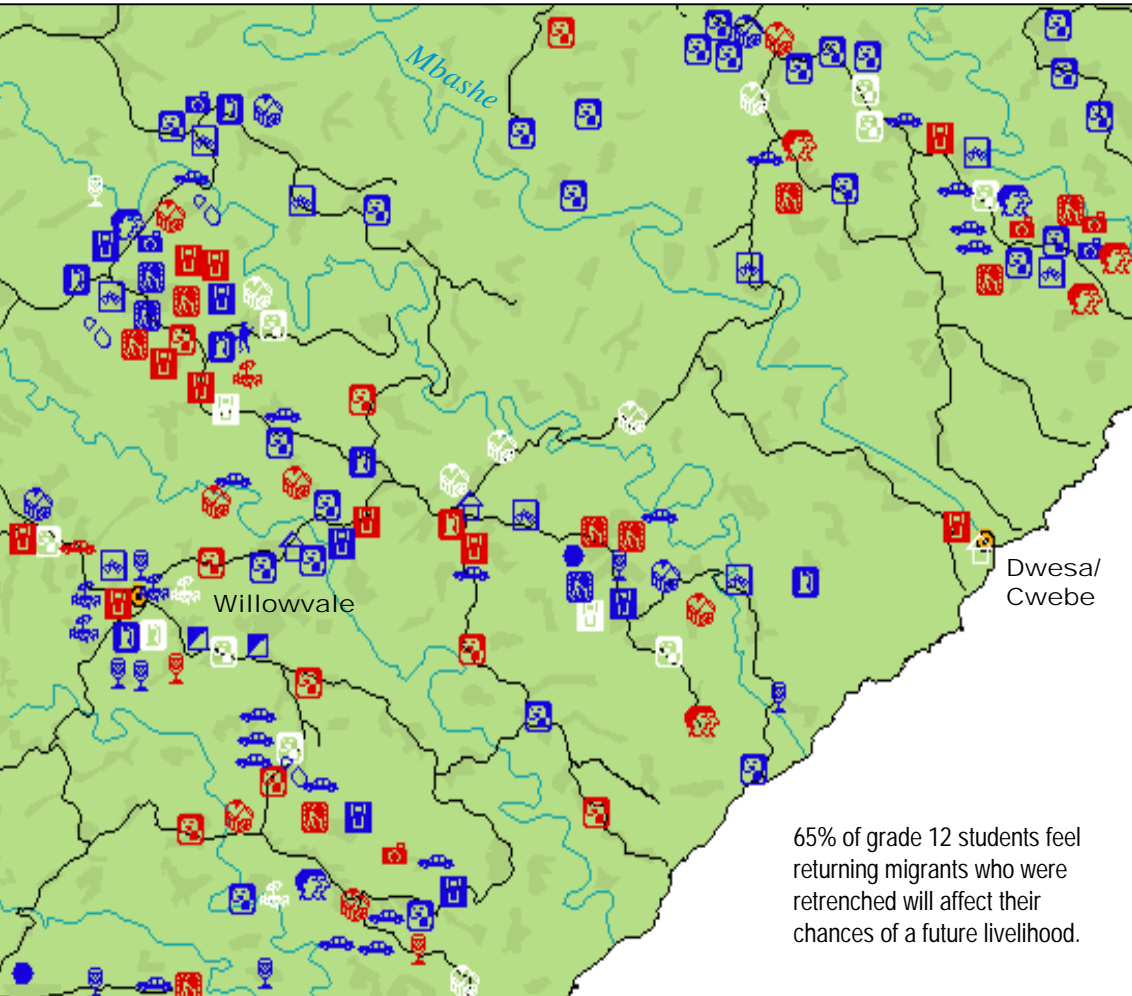
February

"People have a limited understanding on how to manage finances, some need financial support and many do not have a marketing strategy for their businesses."
 -Grade 12 Student from Ncedisizwe Senior Secondary School

Sunday	Monday	Tuesday	Wednesday	Thursday	Friday	Saturday
			World Wetland's Day			
		1	2	3	4	5
6	7	8	9	10	11	12
13	14	15	16	17	18	19
20	21	22	23	24	25	26
27	28	29				

Dwesa/Cwebe service businesses

What is the single most common type of service business in this area?
 Which businesses from the legend are missing on the map?
 Which new businesses are needed in this area?



- Barber/Hairdresser
- Bike Repair
- Bottle Store
- Doctor
- Garage/Mechanic
- General Dealer
- Hotel
- Music
- Photographer
- Restaurant/Cafe
- Shebeen/Tavern
- Shoe Repair
- Spaza Shop
- Taxi
- Traditional Medicine
- Undertaker
- Vendor
- Veterinarian
- Welder
- Other

The colour of the symbol represents the owner's sex

- Male Owner
- Female Owner
- Combined Owners

65% of grade 12 students feel returning migrants who were retrenched will affect their chances of a future livelihood.

March

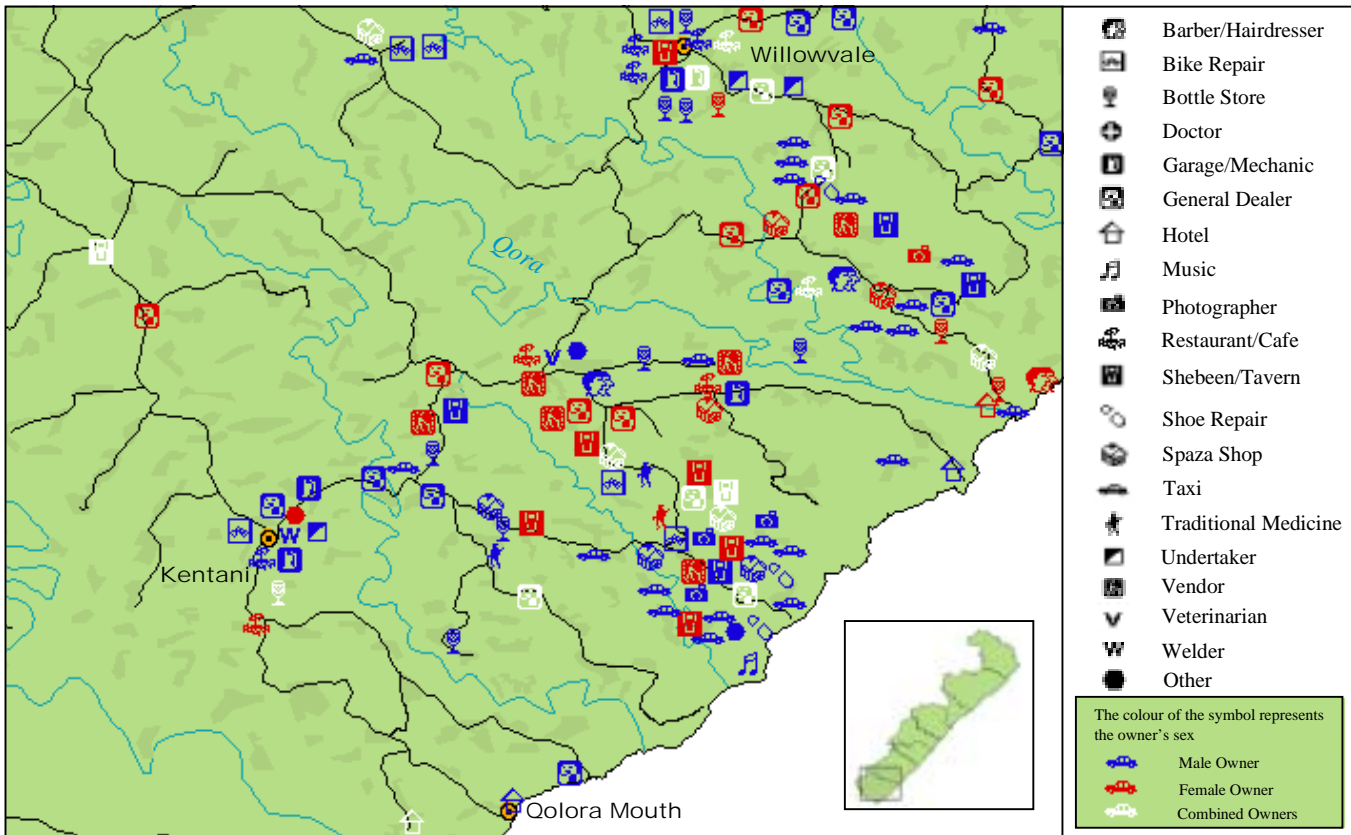
"Most men who own businesses are those who were retrenched from the mines, so they are the ones who have the capital to start their own businesses. Its not as if we women do not want to participate."

-Female student from Nqabara Senior Secondary School

Sunday	Monday	Tuesday	Wednesday	Thursday	Friday	Saturday
			1	2	3	4
5	6	7	8	9	10	11
12	13	14	15	16	National River's Day	18
19	20	Human Rights Day	22	23	End of first school term (Eastern Cape)	25
26	27	28	29	30	31	

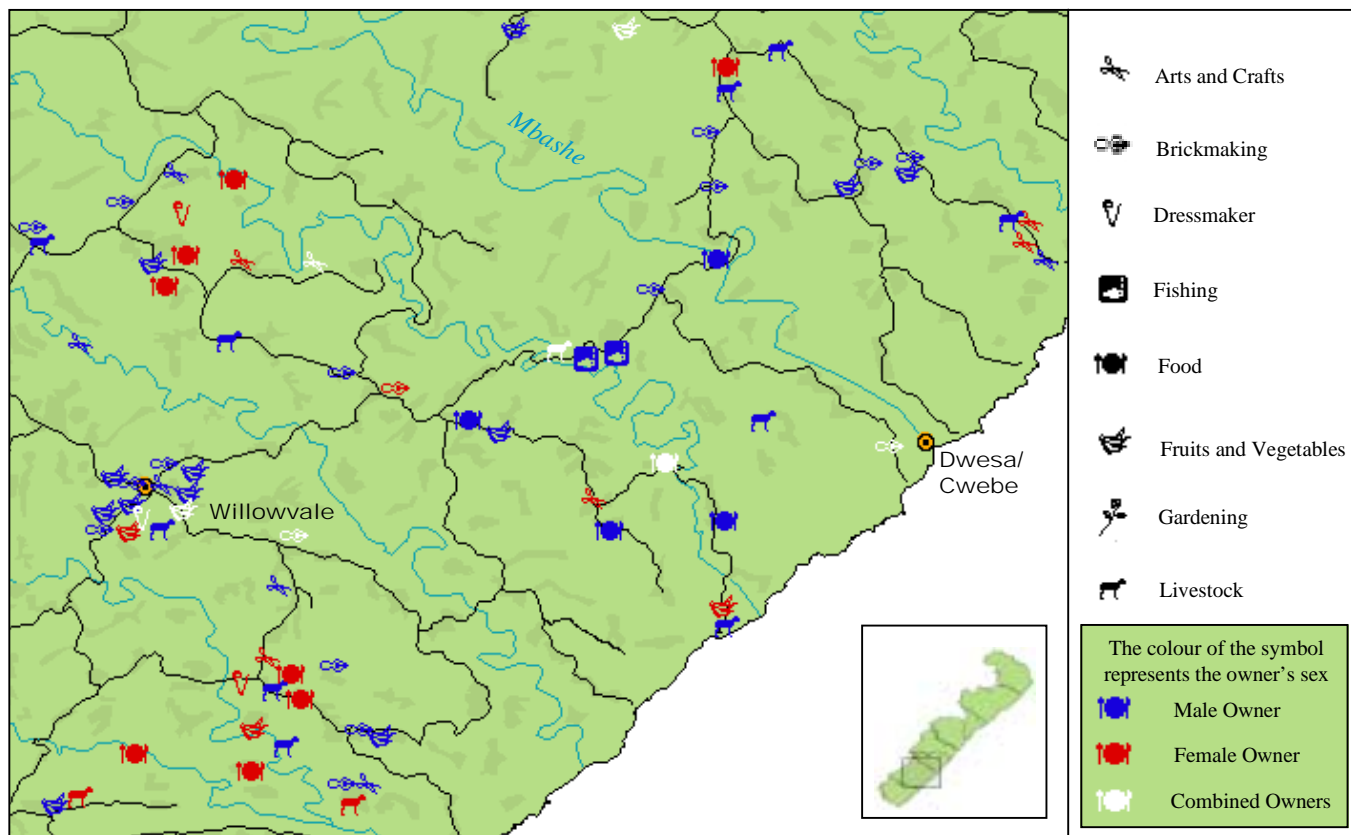
Kentani and Willowvale service businesses

What is the most common type of female owned business in this area?

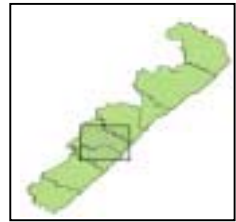


Dwesa/Cwebe production businesses

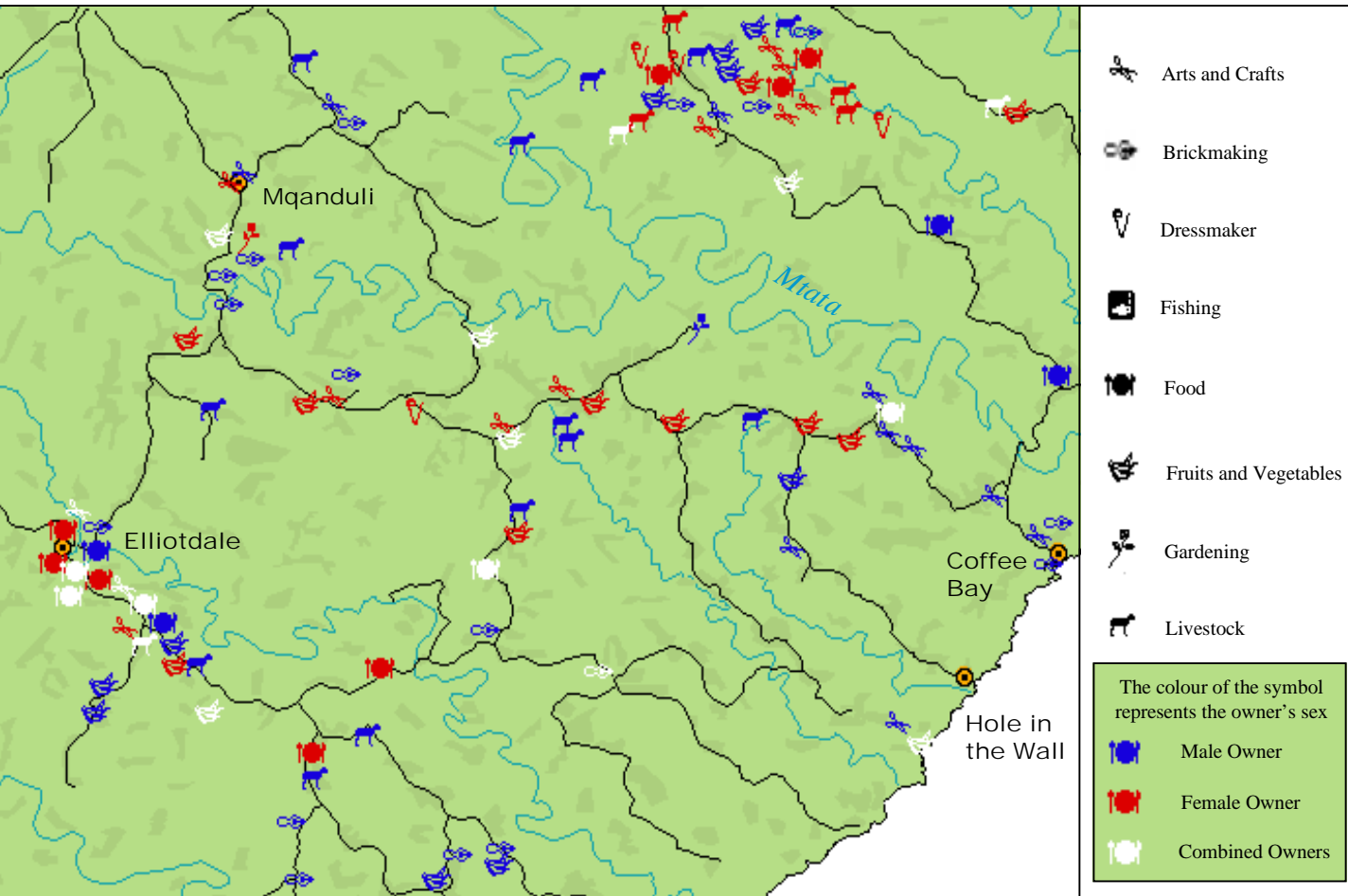
What new production businesses might work in this area?



Coffee Bay and Hole in the Wall production businesses



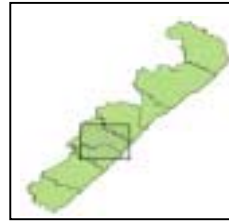
What do you notice about the locations and grouping of businesses?
 Can you suggest some reasons why it is like this?
 If you were to start your own business, where would you locate it?



April

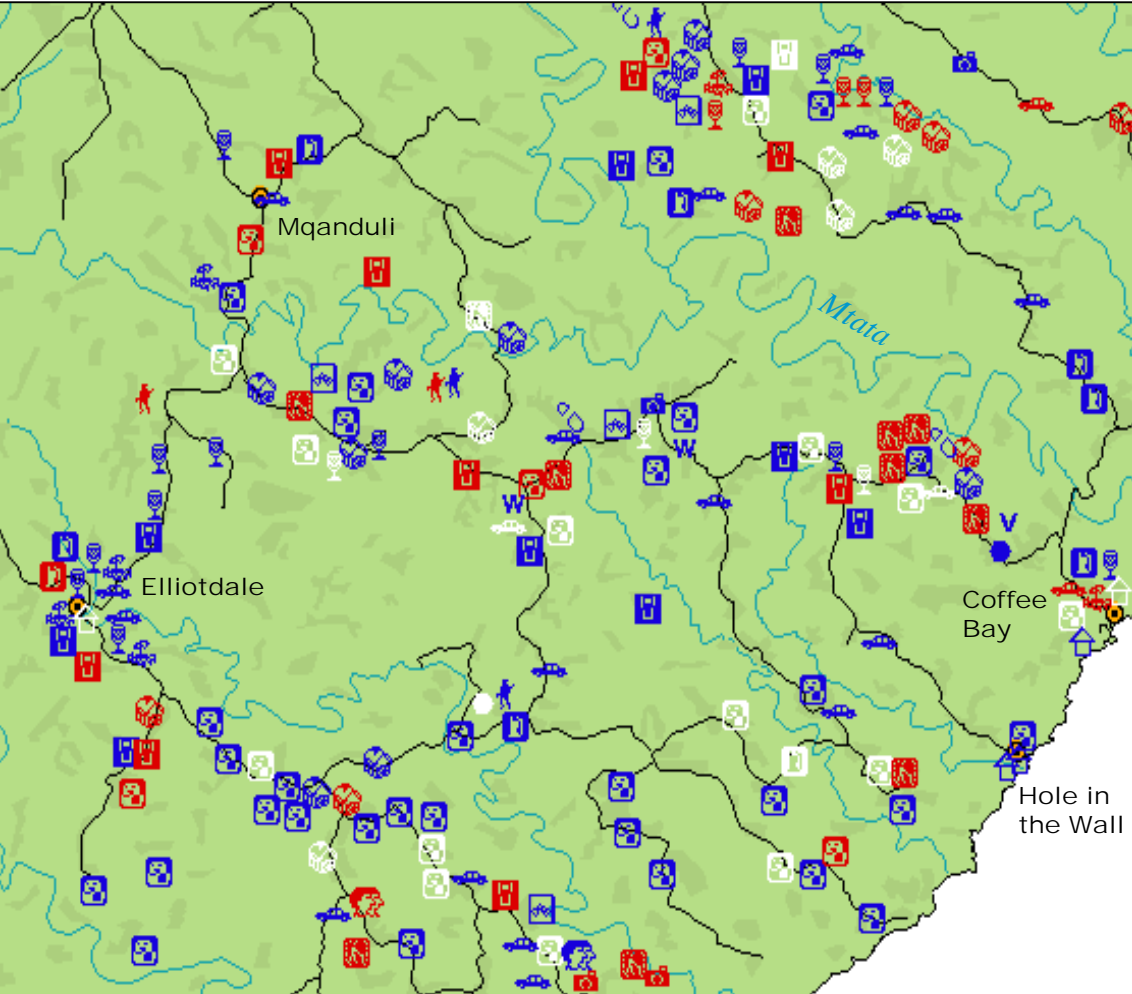
19% of grade 12 students feel they will live in their community after leaving school (26% did not know if they would).

Sunday	Monday	Tuesday	Wednesday	Thursday	Friday	Saturday
						1
2	3	4	5	6	7	8
9	Start of second school term (Eastern Cape)	10	11	12	13	14
16	17	18	19	20	Good Friday	21
23	Family Day	24	25	26	Freedom Day	27
28	29					
30						



Coffee Bay and Hole in the Wall service businesses

How many shebeens and bottle stores are found in this area?
 Why are there a large number of alcohol-related businesses?
 If you were to start your own business, what kind would you start?



- Barber/Hairdresser
- Bike Repair
- Bottle Store
- Doctor
- Garage/Mechanic
- General Dealer
- Hotel
- Music
- Photographer
- Restaurant/Cafe
- Shebeen/Tavern
- Shoe Repair
- Spaza Shop
- Taxi
- Traditional Medicine
- Undertaker
- Vendor
- Veterinarian
- Welder
- Other

The colour of the symbol represents the owner's sex

- Male Owner
- Female Owner
- Combined Owners

May

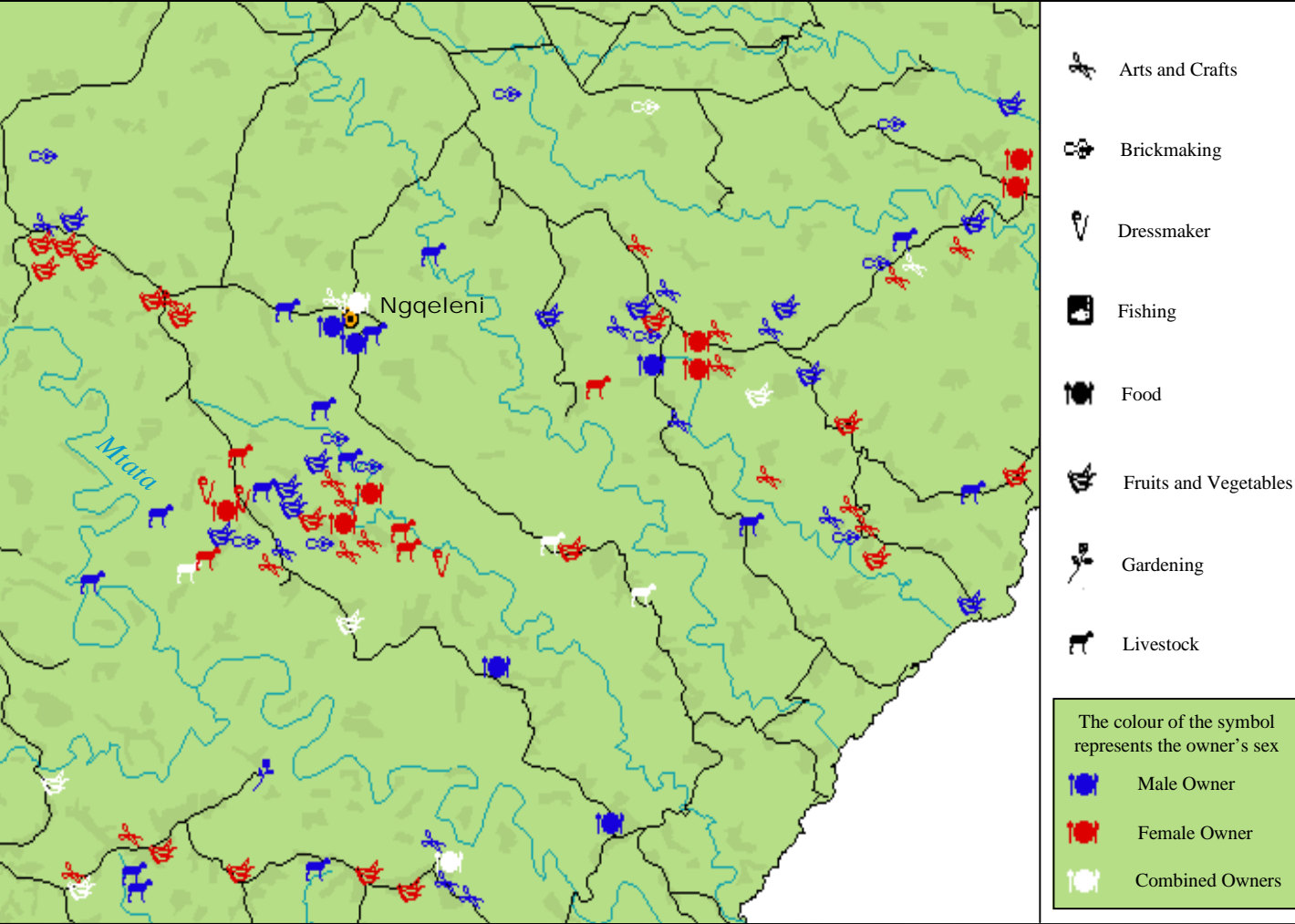
"People do not know what else they can do except create similar businesses to the ones that are already existing."
 -Grade 12 student from Lutubeni Senior Secondary School

Sunday	Monday	Tuesday	Wednesday	Thursday	Friday	Saturday
	Worker's Day					
	1	2	3	4	5	6
7	8	9	10	11	12	13
14	15	16	17	18	19	20
21	22	23	24	25	26	27
28	29	30	31			

CIET counterparts are usually government ministries, local and regional authorities. In the Wild Coast, CIET works with the Ecsecc and the Department of Education.

Ngqeleni production businesses

What do you notice about the locations and grouping of businesses?
 Why are there areas with very few production businesses?
 If you were to start your own business, would you start a production business?



June

"Most businesses are concentrated in one area and other areas have nothing, and most businesses are owned by men."

-Grade 12 student from Milton Dalasile Senior Secondary School

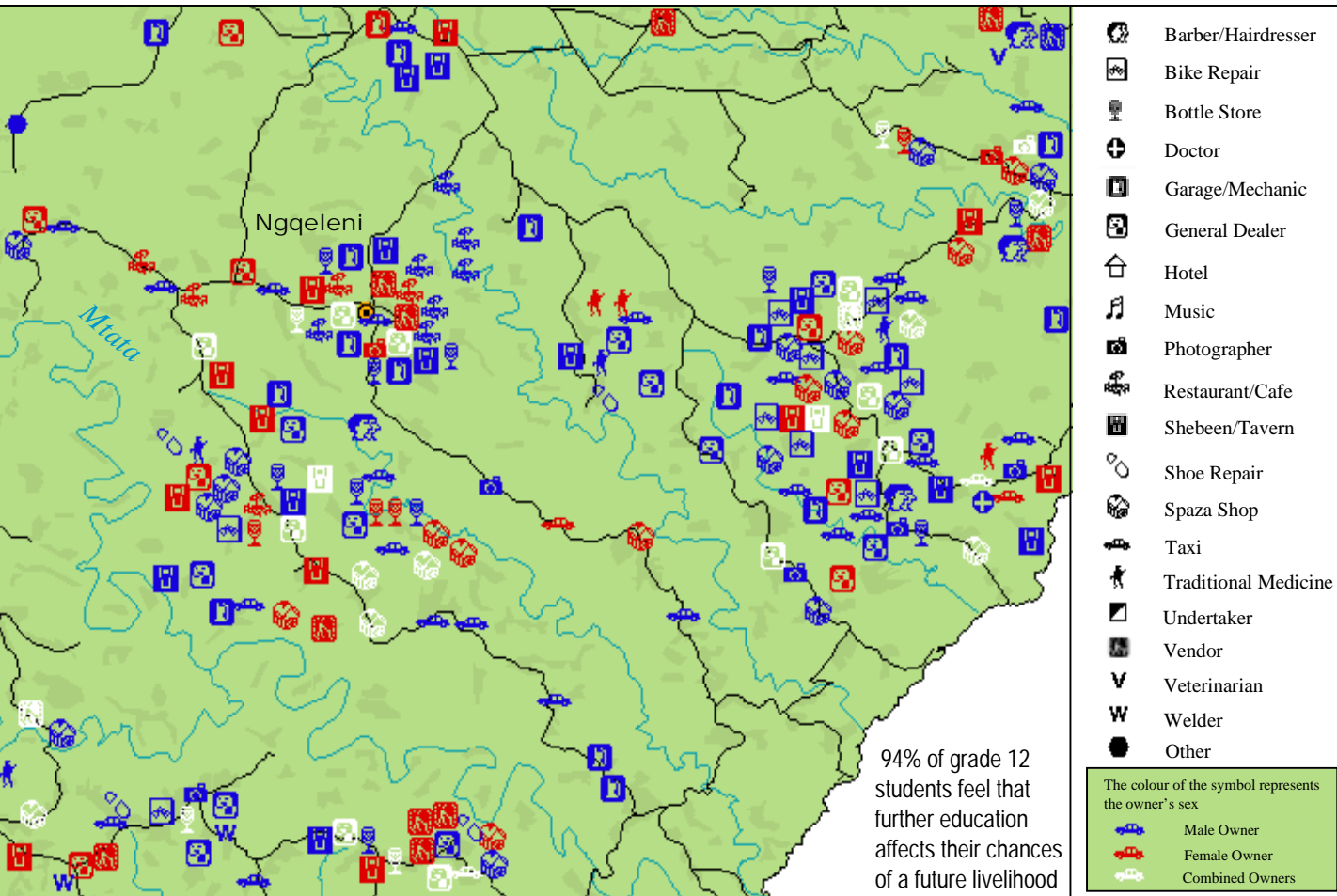
Sunday	Monday	Tuesday	Wednesday	Thursday	Friday	Saturday
					1	2
4	World Environment Day	5	6	7	8	9
11	12	13	14	15	Youth Day	16
18	19	20	21	22	End of second school term (Eastern Cape)	23
25	26	27	28	29	30	

In Gauteng, CIET worked with the local government and police to see what happens to rape cases that are reported. For every 400 rapes, only one rapist gets convicted.



Ngqeleni service businesses

Do there appear to be more male or female owned businesses?
 Are there any kinds of businesses owned only by males?
 If you were to start your own business, would you start a service business?



July

"ABET must have small business development as part of its curriculum for the adults. The Department of Education should do the same, at least from Grade 8 to Grade 12."
 -Grade 12 student from Dalibaso Senior Secondary School

Sunday	Monday	Tuesday	Wednesday	Thursday	Friday	Saturday
						1
2	3	4	5	6	7	8
9	10	11	12	13	14	15
16	17	18	19	20	21	22
23	24	25	26	27	28	29
30	31					

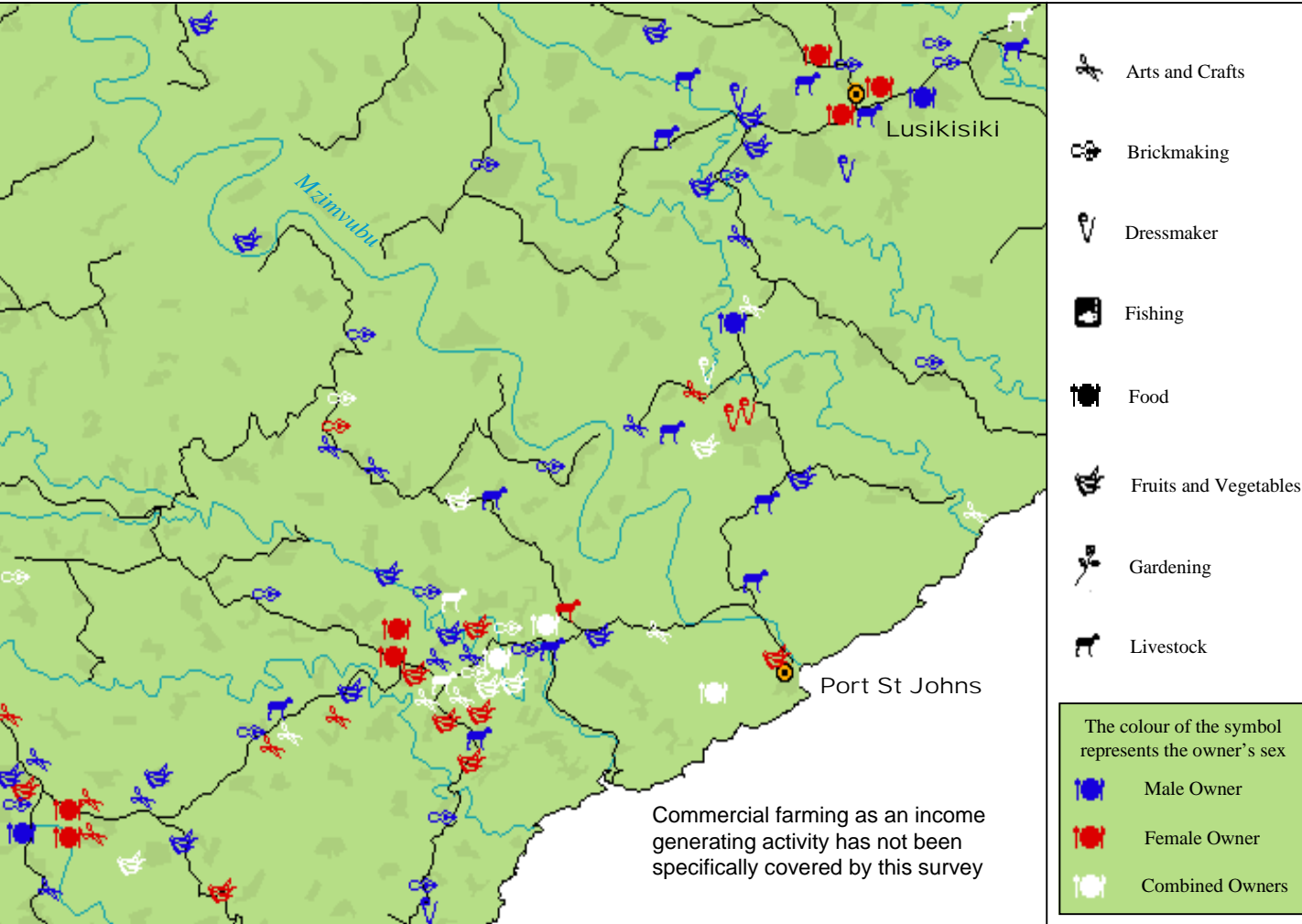


Port St Johns production businesses

Do similar businesses seem spread out, or do they seem to cluster together?

What are some reasons why it is like this?

If you were to start your own business in this area, where would you locate it?



August

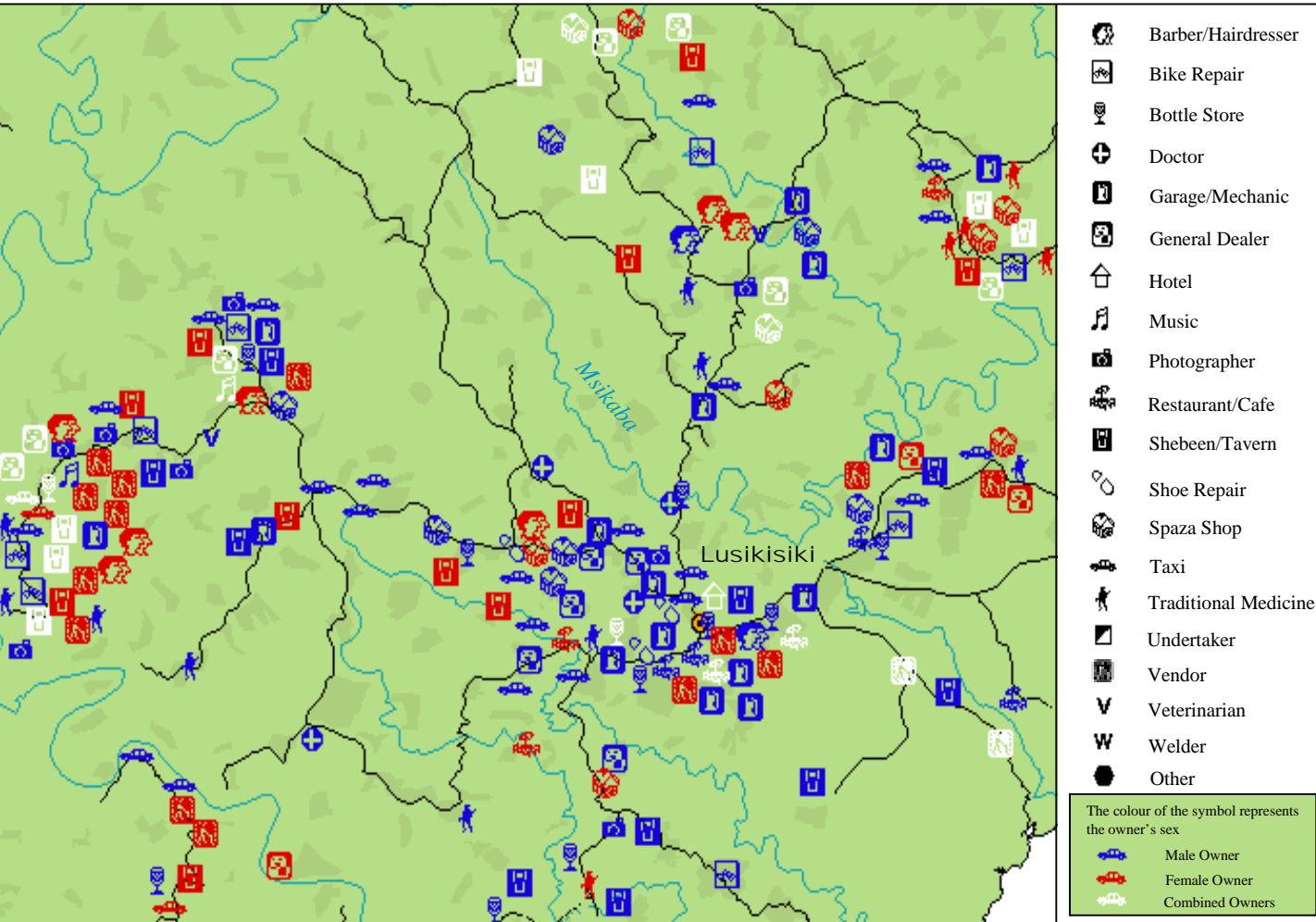
Many students suggest people lack creativity and just copy each other. They feel more information should be accessible about different kinds of businesses.

Sunday	Monday	Tuesday	Wednesday	Thursday	Friday	Saturday
		1	2	3	4	5
6	7	8	National Women's Day	9	10	11
12	13	14	15	16	17	18
19	20	21	22	23	24	25
26	27	28	29	30	31	

Unofficial charges, teacher absenteeism and misuse of public resources represent a big barrier to achieving universal access to primary education worldwide. In Pakistan, CIET found many girls had to bribe their teacher to come to school.

Lusikisiki service businesses

What kinds of businesses seem to cluster towards the larger settlements?
 What are some reasons for this clustering?
 Which businesses from the legend are missing from this map?



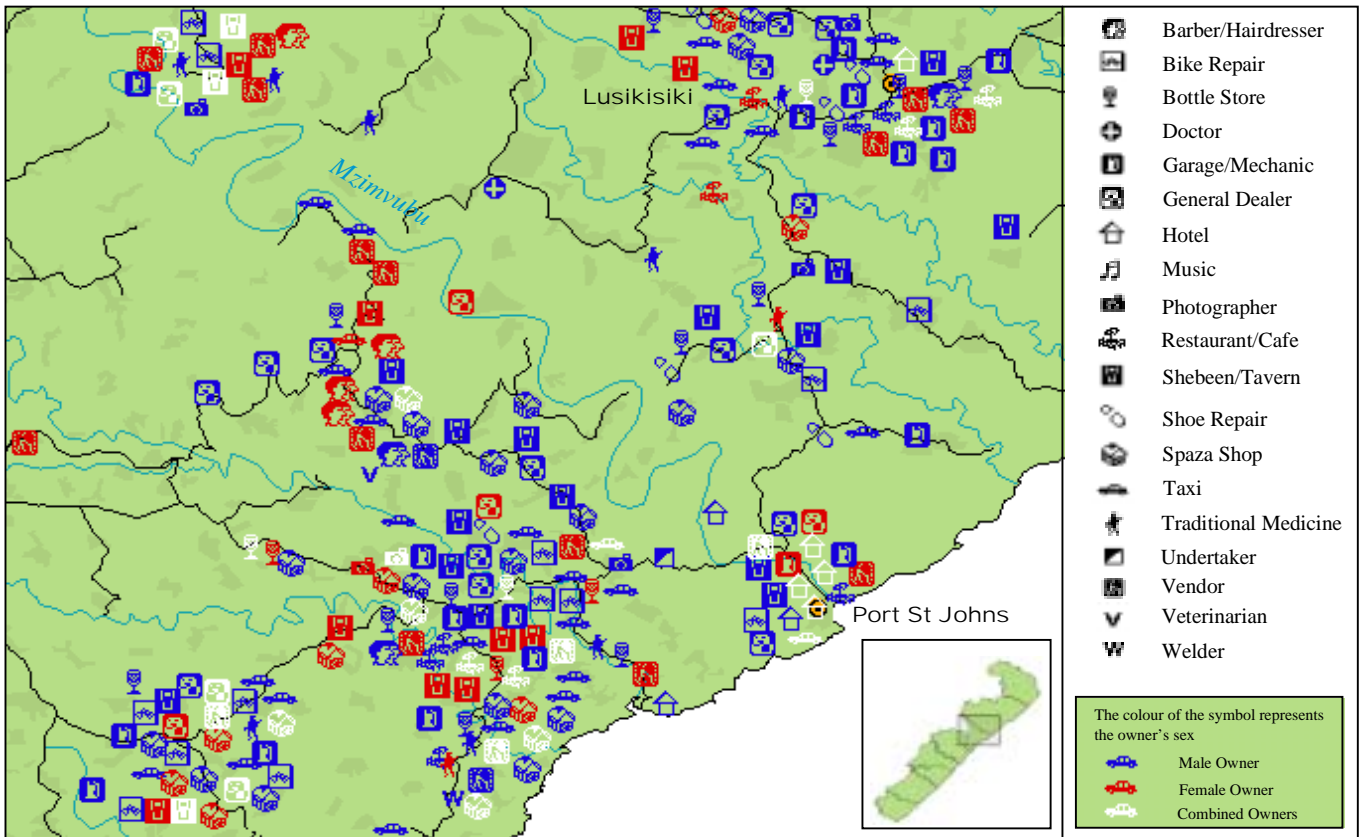
September

"Roads are bad in those areas that do not have small businesses. People tend to think about those places where they are able to attract markets like taxi ranks, schools, etc, which is why businesses are packed in one place."
 -Grade 12 student from Bodweni Senior Secondary School

Sunday	Monday	Tuesday	Wednesday	Thursday	Friday	Saturday
					National Arbor Day	
					1	2
3	4	5	6	7	8	9
10	11	12	13	14	15	16
					World Ozone Day	
17	18	19	20	21	22	23
Heritage Day	Public Holiday		World Tourism Day		End of third school term (Eastern Cape)	
24	25	26	27	28	29	30

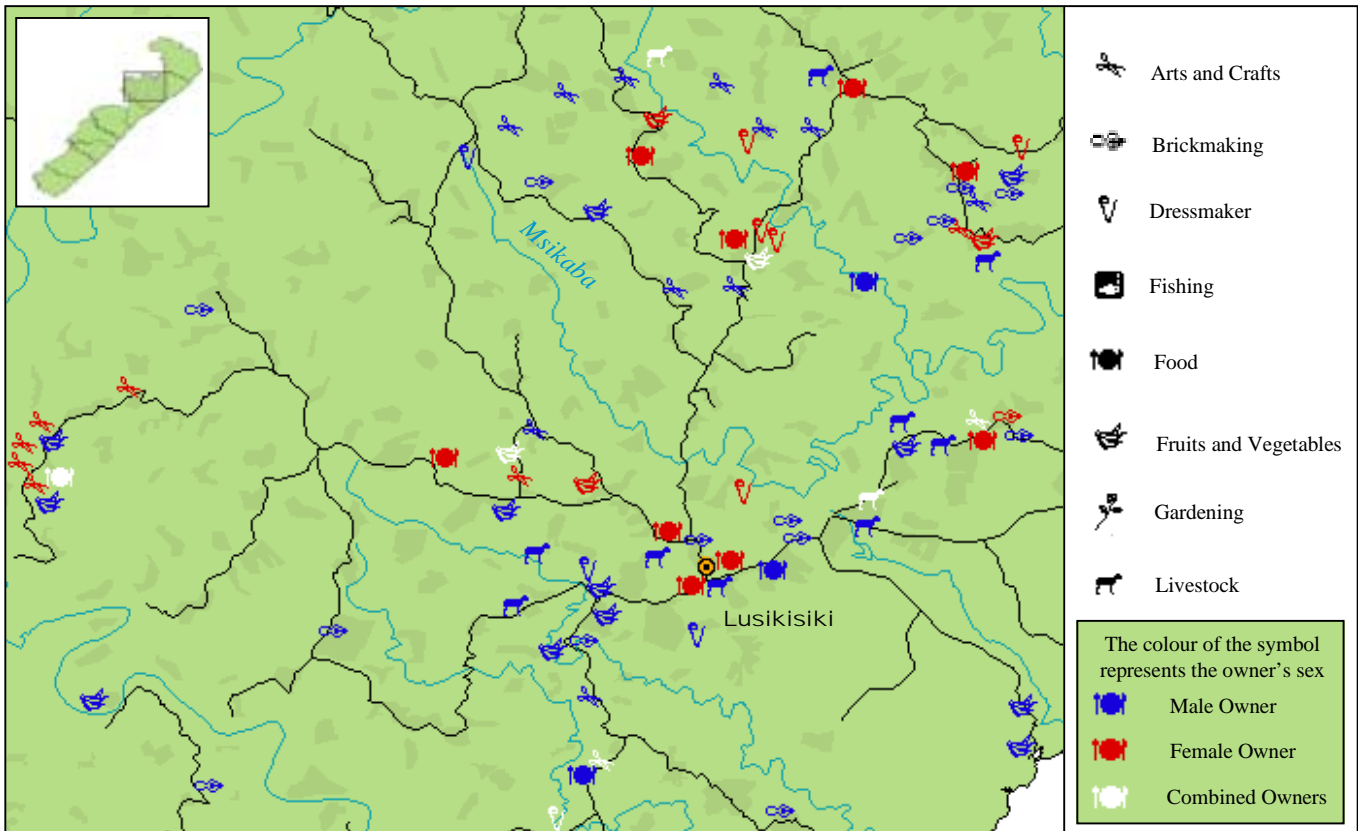
Port St Johns service businesses

If you were to start your own business, would it be a service or production business?



Lusikisiki production businesses

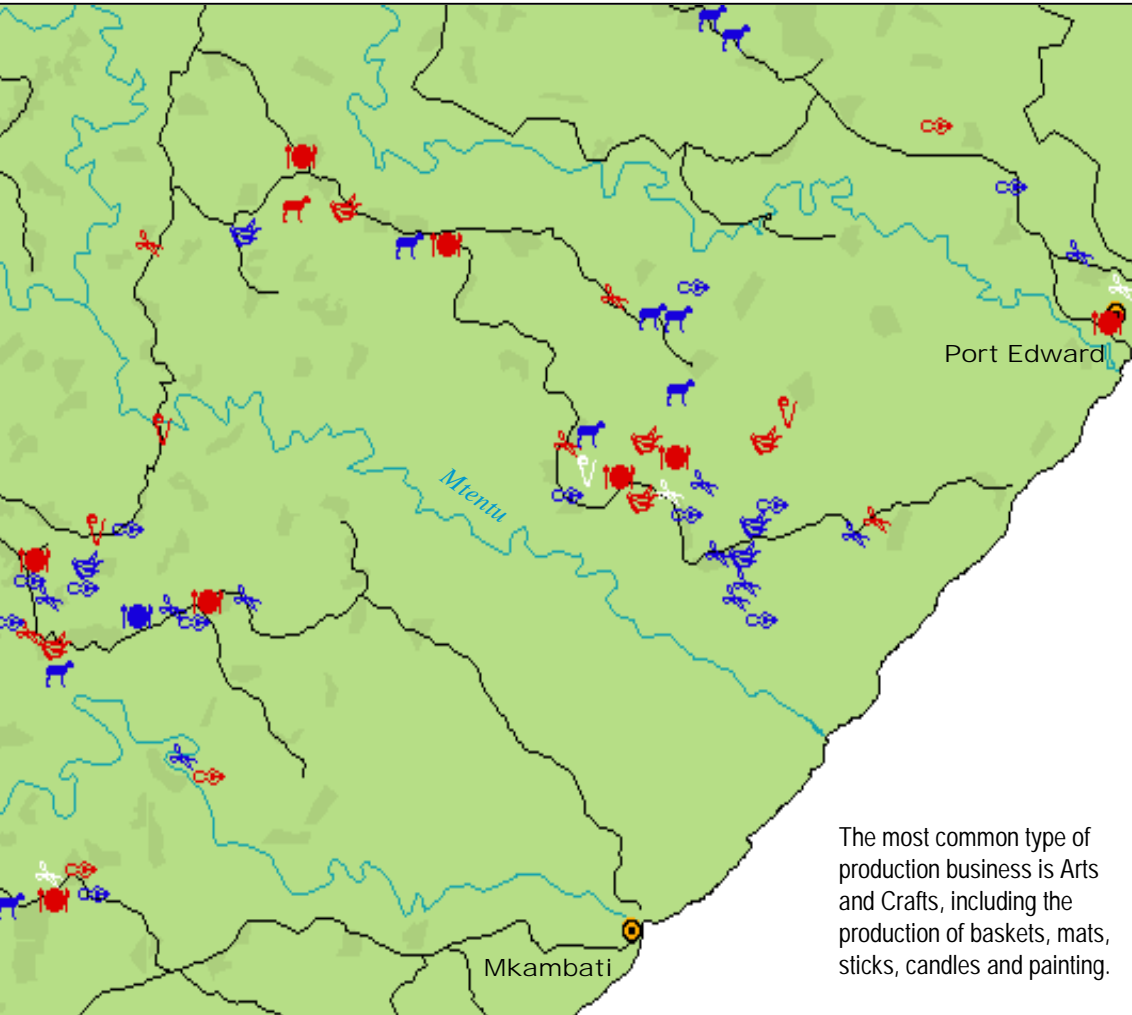
What new production businesses might work in this area?



Corruption in the Customs services is a problem for many exporters and importers. In Bolivia and Nicaragua CIET involved businesses to document the problem and to come up with solutions to counter petty corruption.

Mkambati production businesses

Why do you think there are areas with very few production businesses?
Do you think there is a lack of production businesses in this area?
If so, what kind of production businesses are needed in this area?



- Arts and Crafts
- Brickmaking
- Dressmaker
- Fishing
- Food
- Fruits and Vegetables
- Gardening
- Livestock

The most common type of production business is Arts and Crafts, including the production of baskets, mats, sticks, candles and painting.

The colour of the symbol represents the owner's sex

- Male Owner
- Female Owner
- Combined Owners

October

"Women should come together and form a project that can create a number of jobs and that can be of some use to the community."

-Grade 12 student from Phambili Senior Secondary School

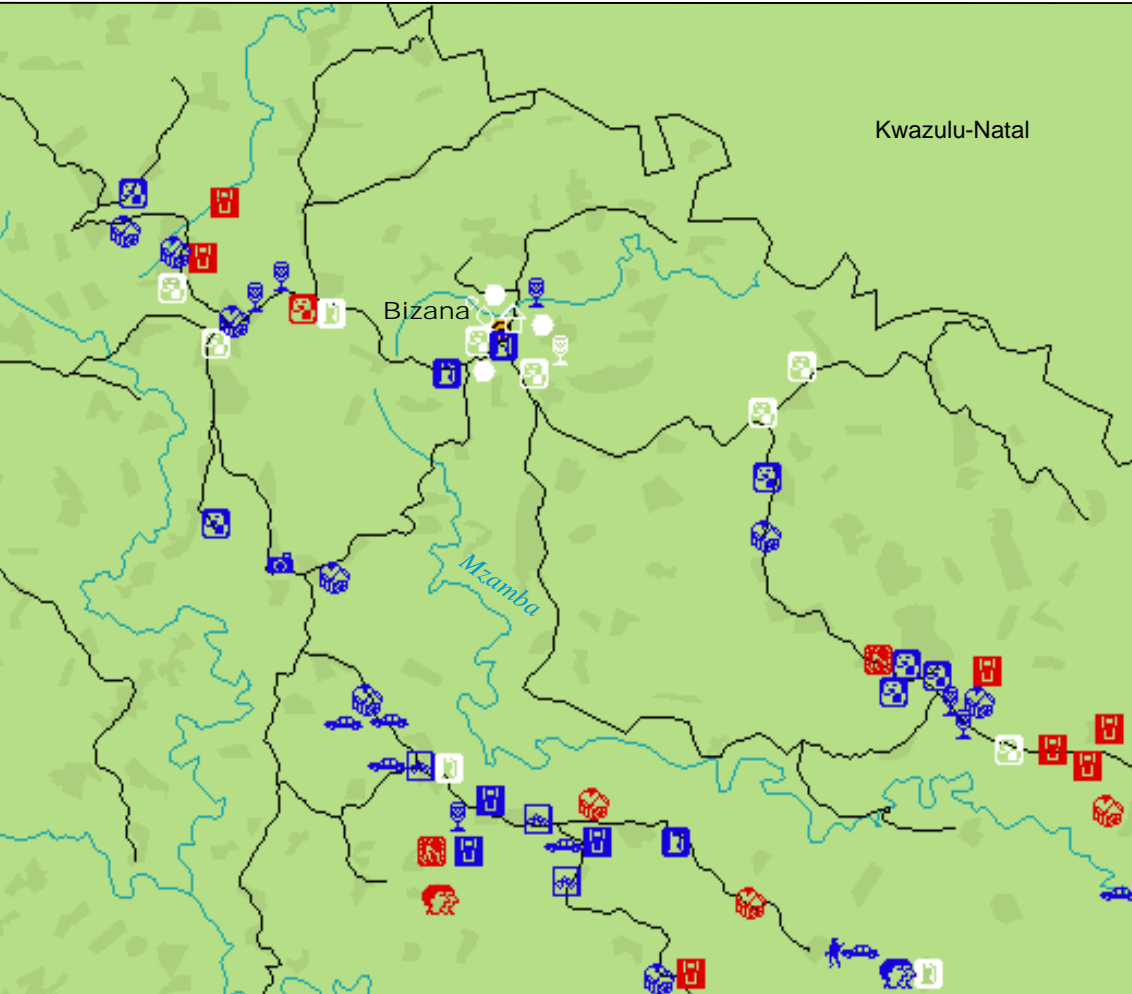
Sunday	Monday	Tuesday	Wednesday	Thursday	Friday	Saturday
1	2 Start of fourth school term (Eastern Cape)	3	4	5	6	7
8	9	10	11	12	13	14
15	16	17	18	19	20	21
22	23	24	25	26	27	28
29	30	31				

Corruption in public administrations forces people to pay twice: once officially, through taxes and user fees, and again through unofficial charges. In a CIET study in Bolivia 70% of people said they had to bribe a civil servant to obtain a birth certificate.

Bizana service businesses



Which service businesses from the legend are not found on this map?
 If you were to start a new business, what kind would you start?
 Where would you locate it?



- Barber/Hairdresser
 - Bike Repair
 - Bottle Store
 - Doctor
 - Garage/Mechanic
 - General Dealer
 - Hotel
 - Music
 - Photographer
 - Restaurant/Cafe
 - Shebeen/Tavern
 - Shoe Repair
 - Spaza Shop
 - Taxi
 - Traditional Medicine
 - Undertaker
 - Vendor
 - Veterinarian
 - Welder
 - Other
- The colour of the symbol represents the owner's sex
- Male Owner
 - Female Owner
 - Combined Owners

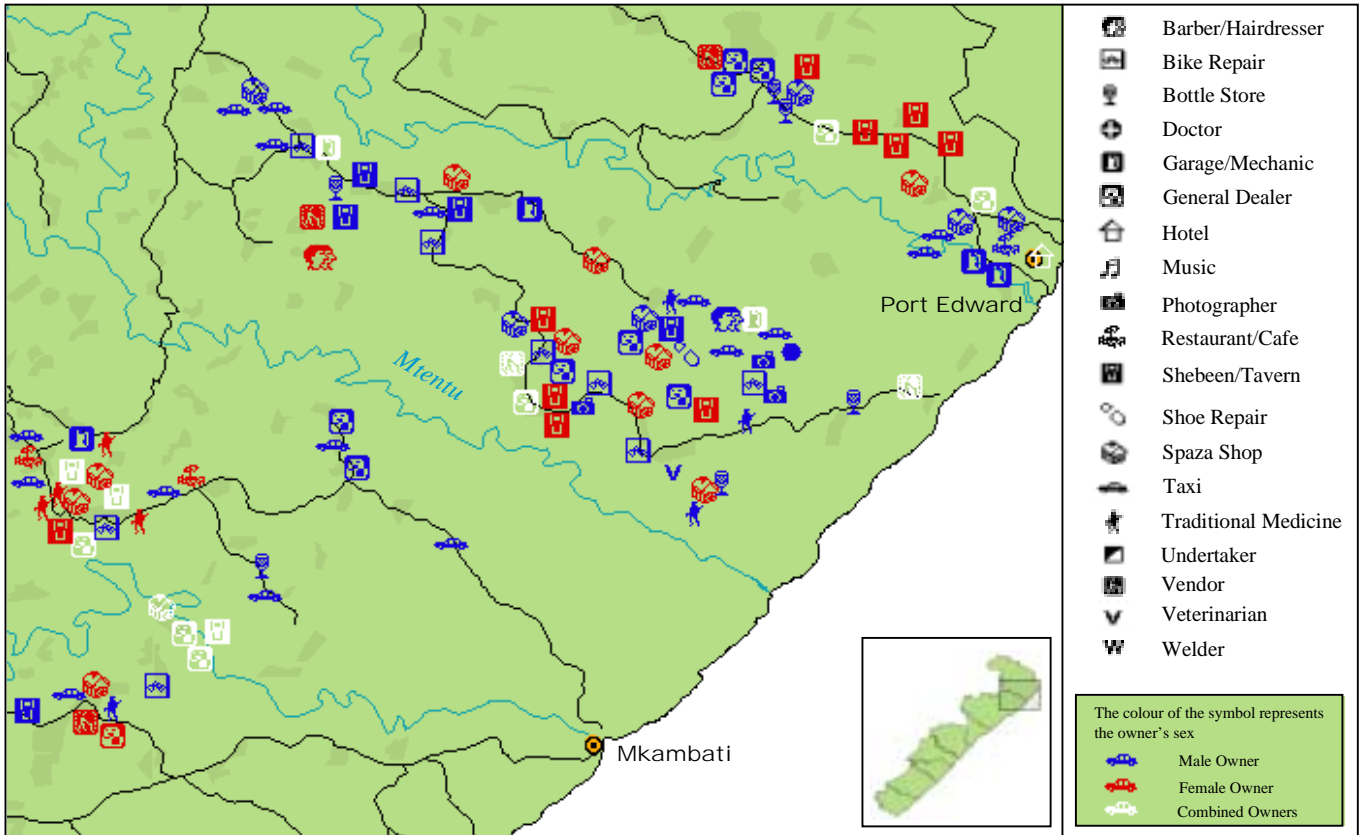
November

Grade 12 students feel that crime, bad customer relations, lack of financial management skills, and lack of information on how to sustain businesses are the main factors that stop development in their communities.

Sunday	Monday	Tuesday	Wednesday	Thursday	Friday	Saturday
			1	2	National Marine Day 3	4
5	6	7	8	9	10	11
12	13	14	15	16	17	18
19	20	21	22	23	24	25
26	27	28	29	30		

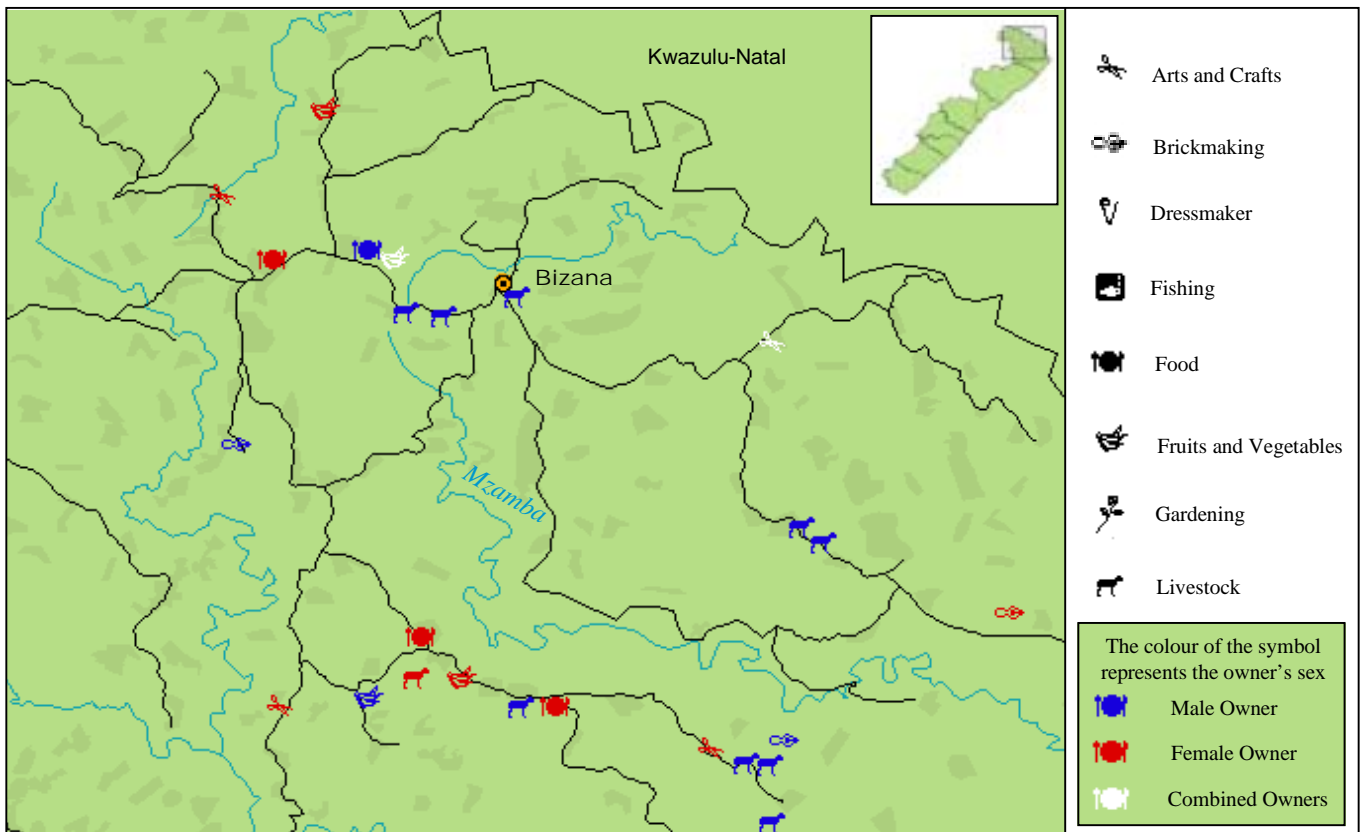
Mkambati service businesses

Which businesses from the legend are not found in this area?



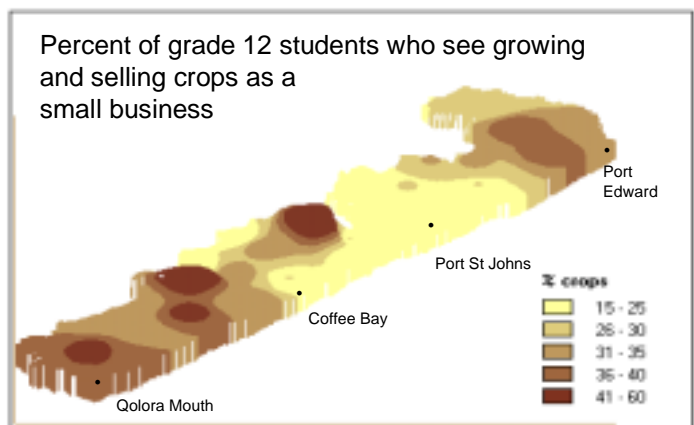
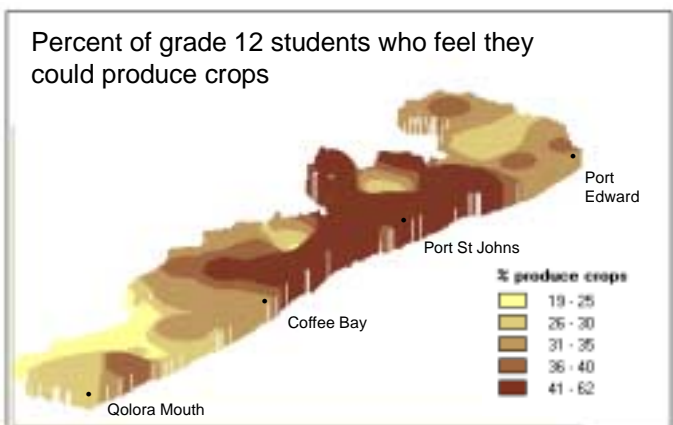
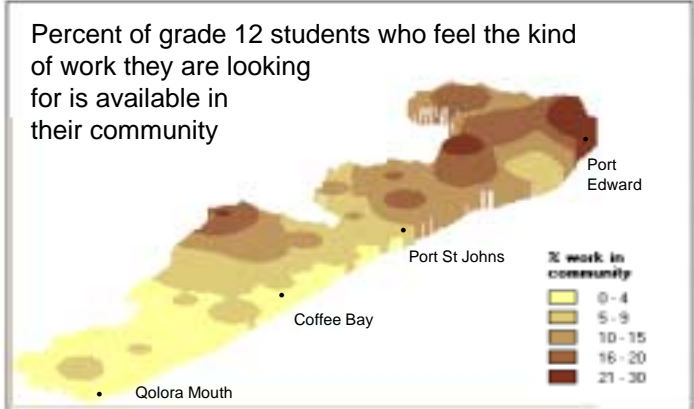
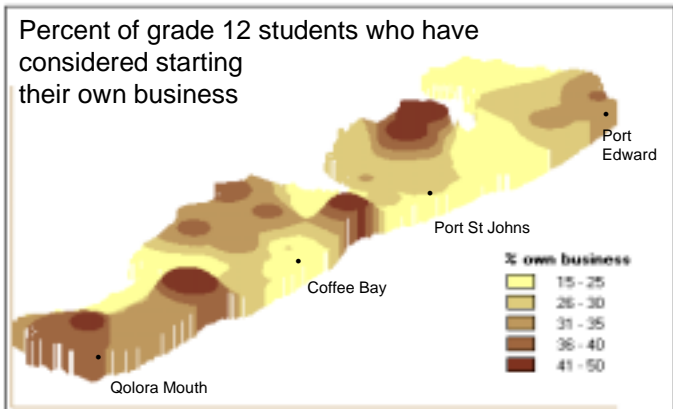
Bizana production businesses

Why are there areas with no production businesses?



Results from the second cycle:

Students need to take the initiative to start their own business after leaving school and generate their own income. Although an increase in skills is necessary, a change in perception is also needed: often students have skills in areas that they don't consider business related.

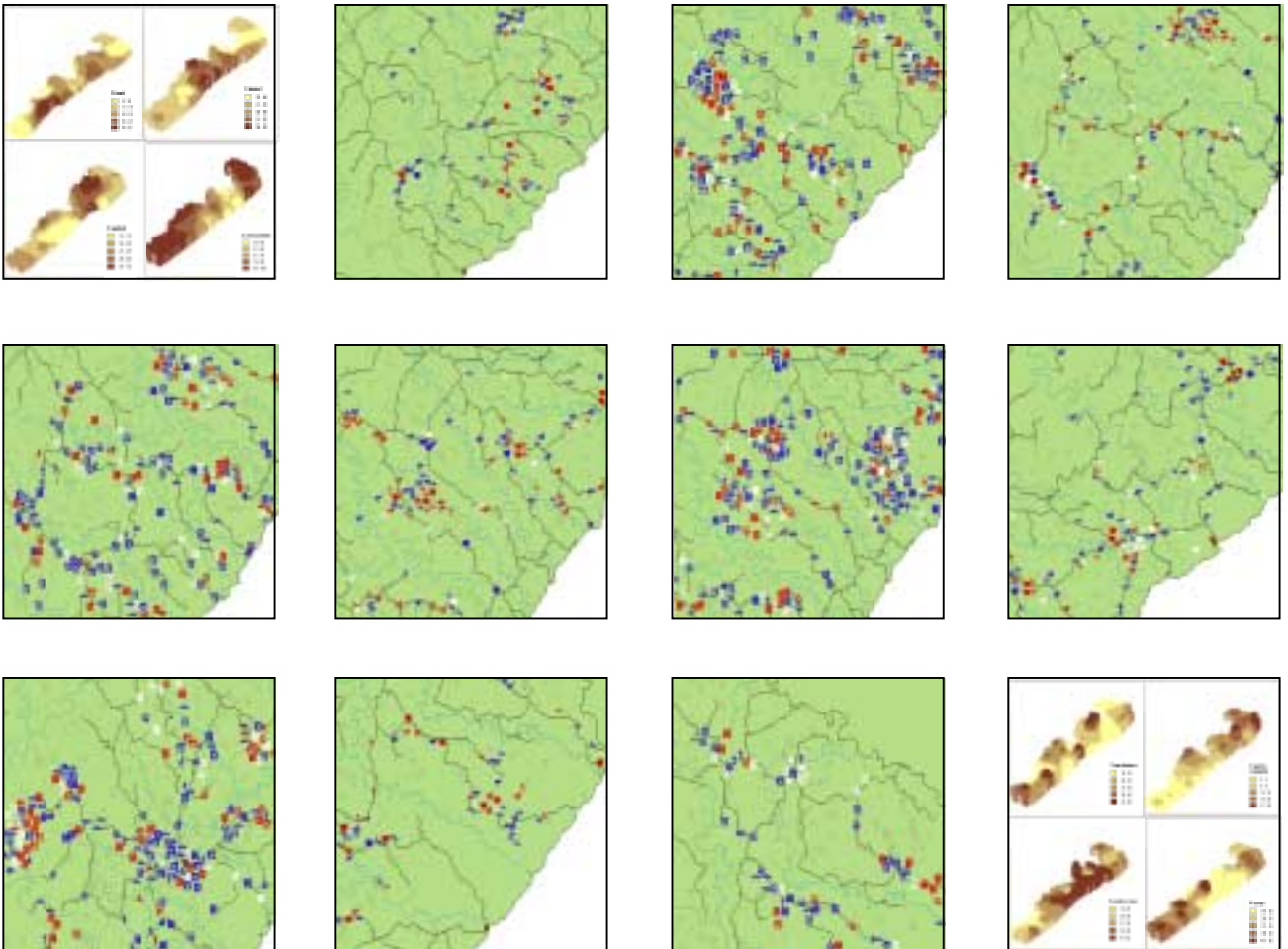


December

The contours in these maps come from a set of 20 sentinel communities that are weighted to be proportional to the population. If 30% of the map area is a certain colour, then 30% of the population falls within the range represented by that colour.

Sunday	Monday	Tuesday	Wednesday	Thursday	Friday	Saturday
					1	2
3	4	5	6	7	8 End of fourth school term (Eastern Cape)	9
10	11	12	13	14	15	16 Day of Reconciliation
17	18	19	20	21	22	23
24 Christmas Day	25	26 Day of Goodwill	27	28	29	30
31						

Wild Coast Spatial Development Initiative - Year 2000 Calendar



If you want to start your own business, contact the SMME Desk of the Department of Finance. There are two in the region, and the head office in Bisho:

Umtata
Tel: 047 531 1191
Mrs C. Kekana

Mount Ayliff
Tel: 039 727 3273
Mr H. Majeke

Bisho
Tel: 040 635 2184
Mr K. Radu

The SMME Desk will be able to assist you with any particular information that you need to start a business. It will tell you where you can get training, how and where to access credit, and offer information about the best options and opportunities in the region.

If you want to know more about adult education projects in your region, contact ABET (Adult Basic Education and Training) in Bisho. Tel: 040 635 0357.

